

OAKVILLE

GD13 | GDIG3 | GDIX3 | GDIX4 | Gas inserts



Discover Napoleon's Oakville® gas insert series, the perfect blend of style and efficiency for your remodeling projects. Featuring a clean-face design, flush-finish accessories, and endless design opportunities, these inserts offer both aesthetic appeal and reliable performance. Enjoy a brilliant display of flames throughout the firebox, designed for easy installation. The Oakville® is ideal for homeowners seeking cost-saving benefits through zone heating, along with replacing old, drafty masonry fireplaces with efficient heating sources. With a multitude of designer accessories offering thousands of style combinations, the Oakville® series ensures heating smarter and saving energy without compromising on great design.

Customize

Included media:



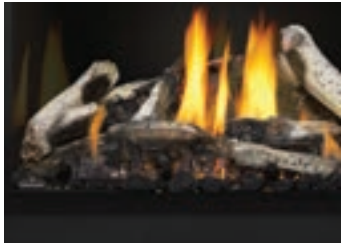
Premium split oak log set
Oakville 3, X3 and X4



Topaz CRYSTALINE ember bed Included
with the Oakville 3 Glass



Premium driftwood log set
Optional with the Oakville X3 and X4

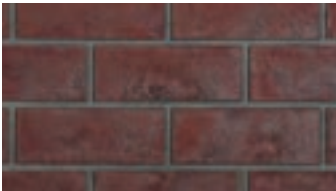


Premium birch log set
Optional with the Oakville X3 and X4

Decorative panels (must choose one):



MIRRO-FLAME
Porcelain reflective radiant panels



Old Town Red standard



Westminster standard



Newport standard

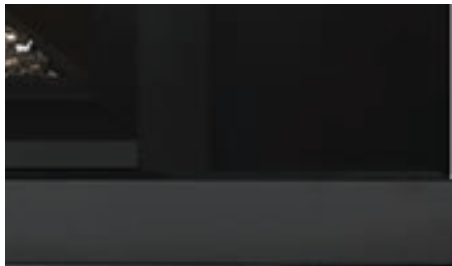
Optional enhancement kits:



Mineral rock

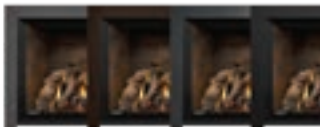


Beach fire

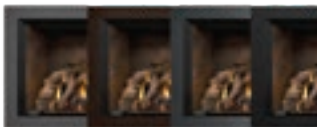


Optional riser box

Optional trims & surrounds:



Small 3-sided faceplates
Available in four colors and for use with the
3-sided backerplates



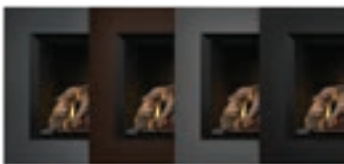
Small 4-sided faceplates
Available in four colors and for use with
the 3 or 4-sided backerplates



Small Arched 4-sided faceplates
Available in four colors and for use with
the 3-sided backerplates



Large 3-sided faceplates
Available in four colors and for use with the
3-sided backerplates



Large 4-sided faceplates
Available in four colors and for use
with the 4-sided backerplate



3-sided backerplates
Available in Small, Medium & Large



4-sided backerplate
Available in Large



Cast iron surround
Available for the GDI3,
GDIG3 & GDIX3



Oakville™ series features

- 24,000 - 40,000 BTUs
- Beautifully realistic split oak logset included (excluding Oakville™ Glass 3)
- Faceplates available in both 2 1/2" or 5" widths
- Directional baffles increase air flow for maximum blower efficiency
- Decorative cast iron surround available (excluding Oakville™ X4)
- Includes top lights for illuminated effect (excluding Oakville™ 3)
- Superior heat-circulating blower available (excluding Oakville™ 3)
- Wide range of media kits, brick panels and porcelain panels available
- Optional birch and driftwood log sets (Oakville™ X3 and X4)
- eFIRE Bluetooth-enabled app on the Oakville™ X4

Good

Better

Best

Best



Oakville 3
GDI3



Oakville 3 Glass
GDIG3



Oakville X3
GDIX3



Oakville X4
GD1X4



FIREPLACE DESIGN STUDIO

See your dream fireplace come to life in front of your eyes!
Scan here to build your custom fireplace with available design options.



OAKVILLE™ 3

- Clean-face design with full firebox flames
- Superior heat-circulating blower available
- Optional riser box provides added height to the fireplace
- Ceramic glass
- Up to 24,500 BTUs
- Full-view design boasts 340 sq. in. viewing area
- Warranty: President's Limited Lifetime

Included controls

Remote

Enjoy added convenience with the included remote—control every function of your including power, flame, heat, and blower speed, from the comfort of your couch.

Innovations

“H” style burner

Provides a brilliant display of flames throughout the firebox.





OAKVILLE™ 3 GLASS

- Clean face design with full firebox flames
- Contemporary Topaz Crystalline™ ember bed
- Includes top lights for illuminated effect
- Superior heat-circulating blower included
- Optional riser box provides added height to the fireplace
- Ceramic glass
- Up to 24,000 BTUs
- Full-view design boasts 340 sq. in. viewing area
- Warranty: President's Limited Lifetime

Included controls

Remote

Enjoy added convenience with the included remote—control every function of your fireplace, including power, flame, heat, and blower speed, from the comfort of your couch.



Innovations

“H” style burner

Provides a brilliant display of flames throughout the firebox.



OAKVILLE™ X3

- Clean-face design with full firebox flames
- Includes top lights for illuminated effect
- Superior heat-circulating blower included
- Optional riser box provides added height to the fireplace
- Ceramic glass
- Dual-burner system for full modulation of front and rear burners up to 30,000 BTUs
- Full-view design boasts 340 sq. in. viewing area
- Warranty: President's Limited Lifetime

Included controls

Remote

Enjoy added convenience with the included remote—control every function of your fireplace, including power, flame, heat, and blower speed, from the comfort of your couch.



Innovations

“H” style burner

Provides a brilliant display of flames throughout the firebox.



OAKVILLE™ X4

- Clean-face design with full triple-layer flames
- Includes top lights for illuminated effect
- Superior heat-circulating blower included
- Optional riser box provides added height to the fireplace
- Ceramic glass
- Dual-burner system for full modulation of front and rear burners from 16,000 up to 40,000 BTUs
- Full-view design boasts 518 sq. in. viewing area
- Warranty: President's Limited Lifetime

Included controls

eFIRE mobile app

Providing a more connected and convenient experience by controlling every setting right from your mobile device. This includes: on/off, flame height and blower speed and ember bed.

Remote

Enjoy added convenience with the included remote—control every function of your fireplace, including power, flame, heat, and blower speed, from the comfort of your couch.



Innovations

“H” style burner

Provides a brilliant display of flames throughout the firebox.

Dual burner

Exclusive system allows for full control of both front and rear burners from 16,000 up to 40,000 BTUs.



Oakville™ X4 with split oak log set, Old Town Red™ standard decorative panel and large 3-sided faceplate pictured.

Model No.	Product name	Dimensions		
		Width	Height	Depth
GDI3-1	Oakville™ 3	28 15⁄16"	20 1⁄2"	14 15⁄16"
GDIG3-1	Oakville™ 3 Glass	28 15⁄16"	20 1⁄2"	17 1⁄8"
GDIX3-1	Oakville™ X3	28 15⁄16"	20 1⁄2"	17 1⁄8"
GDIX4-1	Oakville™ X4	34 1⁄8"	24 3⁄4"	17 1⁄8"



Experience the Power of Fire

Napoleon's Power of Fire research has proved a fireplace can help reduce stress and stimulate your brain.

Scan to learn more about the research and health benefits of fireplaces.



24 Napoleon Road, Barrie, Ontario, Canada L4M 0G8
 103 Miller Drive, Crittenden, Kentucky, USA 41030
 7200 Trans Canada Highway, Montreal, Quebec, Canada H4T 1A3



Consult your owner's manual for complete installation instructions and proper clearances to combustible materials. Check all local and national building codes and gas regulations. All specifications are subject to change without prior notice due to on-going product improvements. Products may not be exactly as shown. Flame height and activity is influenced by varying vent configurations and may not appear as shown. Napoleon is a registered trademark of Wolf Steel Group Inc. EnerGuide - A Canadian efficiency standard based on frequent, short start-up and cool-down cycles. All appliances sold in Canada are subject to this EnerGuide rating system. AFUE- A US efficiency standard (Department of Energy) based on extended on/off cycles, more typical of fireplace usage. Steady State - Reflects the highest possible overall heating efficiency.